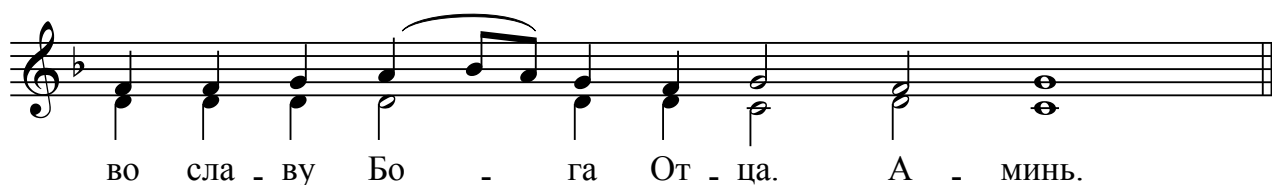


Един свят

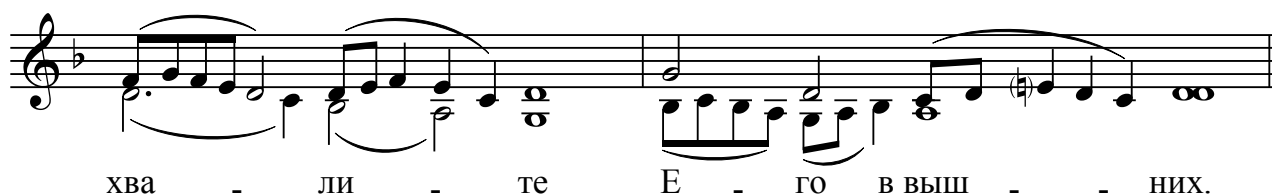
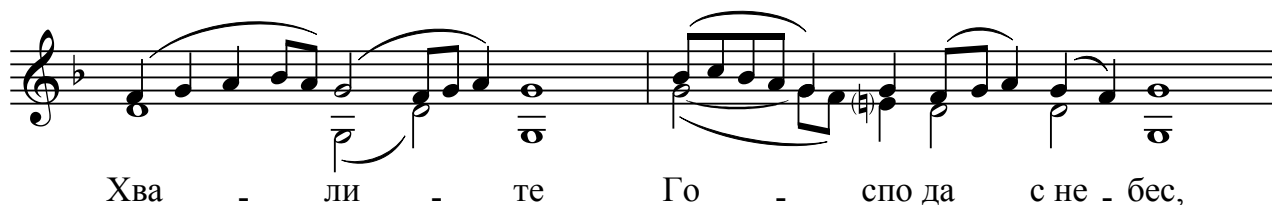
Свияжский распев
Н. Воронин



Причастны

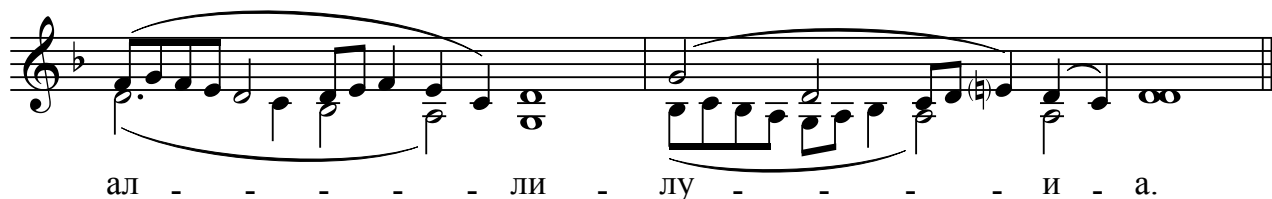
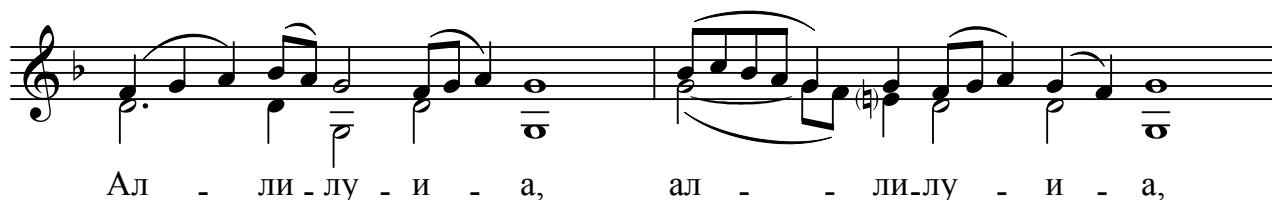
В воскресенье

Свияжский распев



Аллилуиа

Свияжский распев



2


В понедельник - св. Безплотным силам



Тво - ряй ан - ге - лы Сво - я ду - - хи
и слу - ги Сво - я пла - мень ог - нен - ный.

The musical notation consists of two staves. The first staff contains the melody and accompaniment for the first line of text. The second staff continues the melody and accompaniment for the second line of text. The key signature has one flat (B-flat), and the time signature is 4/4.

Во вторник - св. Иоанну Предтече



В па - мять веч - ну - ю бу - дет пра - вед - ник,
от слу - ха зла не у бо-ит - - - ся.

The musical notation consists of two staves. The first staff contains the melody and accompaniment for the first line of text. The second staff continues the melody and accompaniment for the second line of text. The key signature has one flat (B-flat), and the time signature is 4/4.

В среду - Пресвятой Богородице



Ча - шу спа - се - ни - я при - - - и - му
и и - - - мя Го - спод-не при - зо - ву.

The musical notation consists of two staves. The first staff contains the melody and accompaniment for the first line of text. The second staff continues the melody and accompaniment for the second line of text. The key signature has one flat (B-flat), and the time signature is 4/4.

В четверг - св. апостолам

Во всю зем - лю и - зы - де ве - ща - ни - е их
и в кон - цы все лен - ны - я гла - го - - - лы их.

В пятницу - св. Кресту

Спа - се - ни - е со - де - лал е - си
по - сре - де зем - ли, Бо - - - - - же.

В субботу - всем святым

Ра дуй те - ся, пра - вед - ни - и, о Го - - - спо - де,
пра - вым по - до - ба - ет по - - - хва - - - ла.

4

За упокой

Бла - же ни, я - же изbral и при - ял е - си, Го спо ди,
и па - мять их в род и род.

The musical score for 'За упокой' is written on two staves. The first staff contains the melody and accompaniment for the first line of text. The second staff continues the melody and accompaniment for the second line of text. The music is in a minor key and features a mix of eighth and sixteenth notes, with some rests and ties.

На Святую Пасху

Те - ло Хри - сто - во при - и - ми - те,
ис - точни - ка без смерт на го вку - - - си - - - те.

The musical score for 'На Святую Пасху' is written on two staves. The first staff contains the melody and accompaniment for the first line of text. The second staff continues the melody and accompaniment for the second line of text. The music is in a minor key and features a mix of eighth and sixteenth notes, with some rests and ties.